

### Description of the Valve

This type of valve is able to meter a flow while adjusting the needle valve to the required flow. Both flow directions are possible. It is used to control the speed of an actuator for example. If equipped with a check valve in a parallel flow path, the reverse flow is blocked. If the flow line has to be shut-off, the valve can be closed completely.

### Technical Data of the Valve

Nominal size: DN 2 ..DN 6  
Nominal pressure: PN 690 bar (10.000psi)  
Temperature range: -25°C..80°C  
Material: 316, 430, brass  
Wetted parts: stainless, ceramic

### Media

Mineral oil, water, water glycol  
Others (nitrogen) please contact us

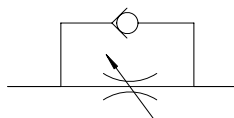
### Options

- The following options are available
- NBR-sealing, Viton-sealing for higher temperatures
  - FKM-sealing for low temperature
  - Additional checkvalve
  - Portsizes

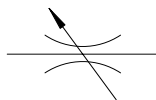
### Designation

406006 XXX (Throttle (check) valve DN6)  
406003 XXX (Throttle (check) valve DN3)  
406002 XXX (Throttle (check) valve DN2)

### Symbol



Throttle check valve

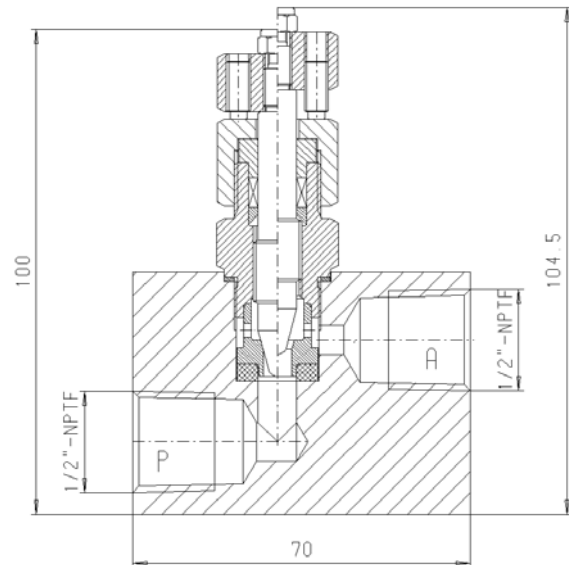


Throttle valve

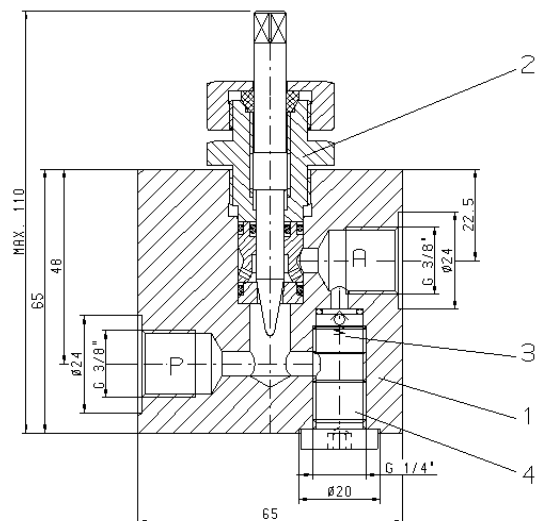
### Mounting

The valvehousing is body-ported through NPT or BSP or any other thread, portsize to be determined. The valve can be mounted using brackets, refer to drawing.

### Drawing of the Valve (Throttle)



### Drawing of the Valve (Throttle-check)



### Photographic view

